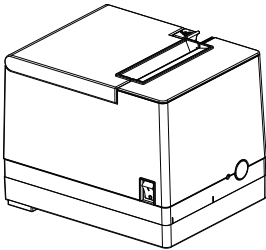


Fast Installation Guide

Thermal Receipt Printer

(This guide uses one model as an example.)

Product View:



Radio model approval code :

CMIIT ID: 2021DP14290

CMIIT ID: 2021DP11268

CMIIT ID: 2020DP5109(M)

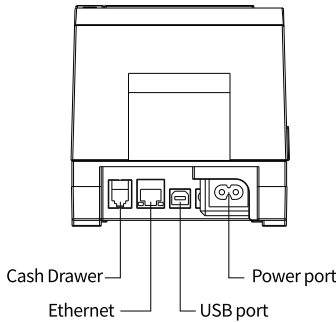
CMIIT ID: 2019DP8740

CMIIT ID: 2018DP1893

The different radio modules are subject to the actual product model.

Printer connection:

- a. Connect adaptor power core to the power socket.
- b. Connect interface cable into portsin the back.
- c. Connect cash drawer to the cash drawer port.

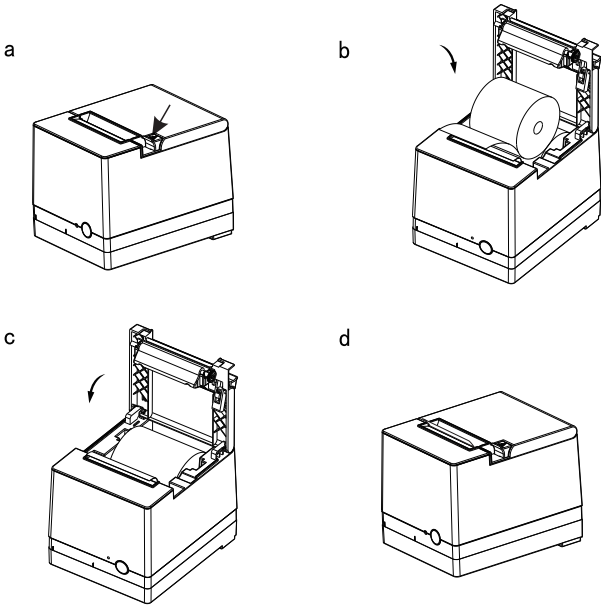


Remarks:

The interface and appearance of the printer will vary depending on different model. The actual interface and appearance are subject to the model you purchased.

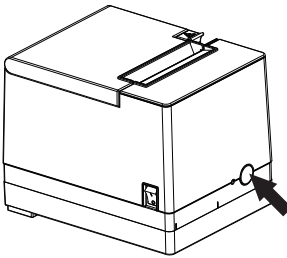
Install the paper roll

- a. Press the button to open the top cover.
- b. Install the paper roll into the printer.
- c. Pull out some paper outside the printer
- d. Close the top cover



- Specifications, accessories, parts and procedures are subject to the actual machine, subject to change without prior notice.

Print and reset Bluetooth/WiFi information



Function	Operating Instructions
Print Bluetooth information	In standby mode, press and hold the FEED button about 3 seconds, release the button after beeping
Print WIFI information	In standby mode, press and hold the FEED button about 6 seconds, release the button after beeping
Reset Bluetooth information	In standby mode, press and hold the FEED button about 15 seconds, release the button after beeping
Reset WiFi information	In standby mode, press and hold the FEED button about 20 seconds, release the button after beeping

Technical Parameters

Print method	Direct thermal Line	
Print head resolution	203dpi	
Print speed	200mm/s	
Print width	72mm(max)	
Print Command	Compatible with ESC/POS	
Interface	Standard	USB+Ethernet
	Optional	USB+Cash Drawer、USB+WiFi+Cash Drawer、USB+Bluetooth+Cash Drawer、 USB+Ethernet+Cash drawer
Character Size	ANK Font; Font A: 12×24dots; Font B: 9×17dots Chinese Character: 24×24dots	
Barcode mode	UPC-A/UPC-E/JAN13(EAN13)/JAN8(EAN8)/ITF/CODABAR/ CODE39/CODE93/CODE128/QRCODE	
Character set	GB18030 simplified Chinese	
Reliability	Mechanism: 150km; Auto Cutter: 1.5 million cuts	
Paper thickness	0.06~0.08mm	
Auto cutter	Semi-cut	
Power supply	DC 24V/1.25A	
Cashdrawer out	DC 24V/0.5A	
Work environment	Temperature : 5°C~40°C, Humidity : 20%~90%	
Storage environment	Temperature : -25°C~55°C, Humidity : 20%~93%	

- Warning:** This product is an A-level product. In a residential environment, running this equipment may cause Radio jamming.
- Warning:** Sharp edges, can not touch.
- Warning:** Overheat parts! Touching this component can burn your fingers. After turning off the power, wait for half an hour before touching the component.

Certificate



Warranty Card

Product Model	
User' s Name	
User' s Add.	
Date of Purchase	
User' s Contact	
Distributor Name	
Distributor Add.	
Machine Fault Description:	

Note: Please keep the warranty card properly for after-sale maintenance.

After-Sales Service

Thermal Receipt Printer

(This user manual supports 80 series models, and takes one model as an example.)



Scan the QR code to download the driver, manual, and user guide video, or visit the official website to download them
<https://www.union-tec.com/product/pr-80vthermal-receipt-printer>



Warranty clause

Warranty scope and period

1. Warranty is limited to defects in material and workmanship.
2. The warranty period is calculated from the date of invoice to the Customer or, if the Customer is not able to provide the proof of invoice, then the date of shipment.
3. Warranty period:
 - a. Printer: 15 months
 - b. Print head: 15 months or 50KM whichever comes first

Warranty service principles

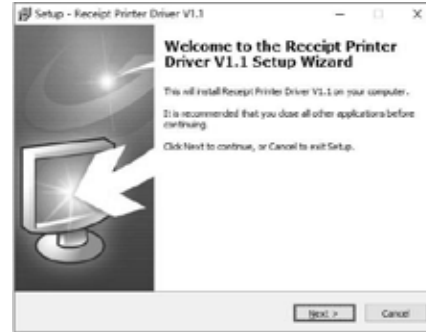
1. Free warranty for products during the warranty period and in warranty scope.
2. A warranty card is required for repairs of printer.
3. Beyond the warranty period, certain maintenance cost will be charge.
4. The warranty is invalid if disassembly or repairs by non technical engineers.
5. The repair printer must be packaged in its original packaging or in a package with considerable protection. It is not under the warranty if damage caused by shipping package.

Non-warranty clause

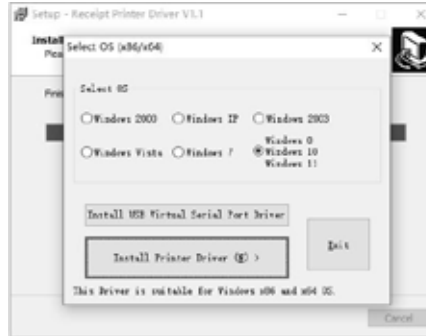
1. No warranty card or contents of warranty card have been altered.
2. Defects or damage caused by improper maintenance.
3. Damage caused by water or has objects.
4. Damage of print head caused by the use of excessive thickness of media.
5. Damage of print head caused by use of inferior consumables.
6. Defects or damage from improper operation or force majeure.
7. Use the printer for other purposes beyond scope of use.
8. Damage caused by repairs by non technical engineers.

Driver Installation

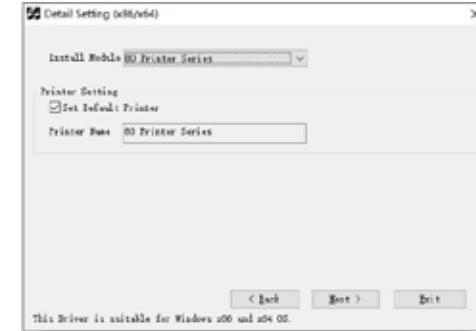
- a. Double click to open the driver zip folder via download and open the printer driver click next.



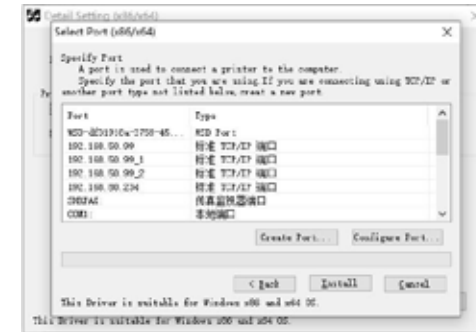
- b. Select the system that matches your computer and click install Printer Driver (N) when you are done.



- c. Select the corresponding printer model, select the correct one and click next.



- c. Select the appropriate printer port and click Install.



The restriction of the use of certain hazardous substances in electrical and electronic equipment

1. Name and content of hazardous substances in products :

Item	Toxic and hazardous substances or elements					
	Pb	Hg	Cd	Cr6+	PBB	PBDE
Power supply / electrical components	×	○	○	○	○	○
Print head	×	○	○	○	○	○
Metal parts	×	○	○	○	○	○
Motherboard	×	○	○	○	○	○
Cable	×	○	○	○	○	○
Packaging and accessories	○	○	○	○	○	○

This table is made in compliance with SJ/T11364 regulations.

O: Indicates that this toxic or hazardous substances contained in all the homogeneous materials for this part, according to GB/T26572 is within the limit requirement.

X: Indicates that this toxic or hazardous substances contained in all the homogeneous materials for this part, according to GB/T26572 is over the limit requirement.

2. Restricted use signs for hazardous substances in electronic and electrical products :



All electrical and electronic products sold in the People's Republic of China must be marked with this symbol, and the number used in the symbol represent the environmentally friendly use period of electronic and electrical products under normal use condition.